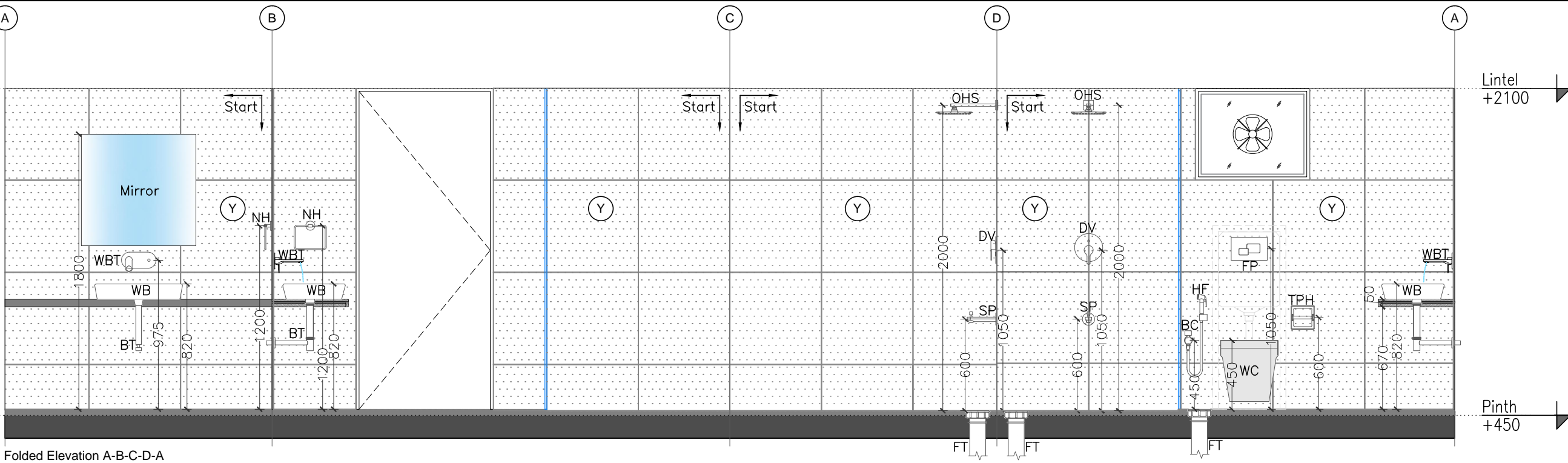
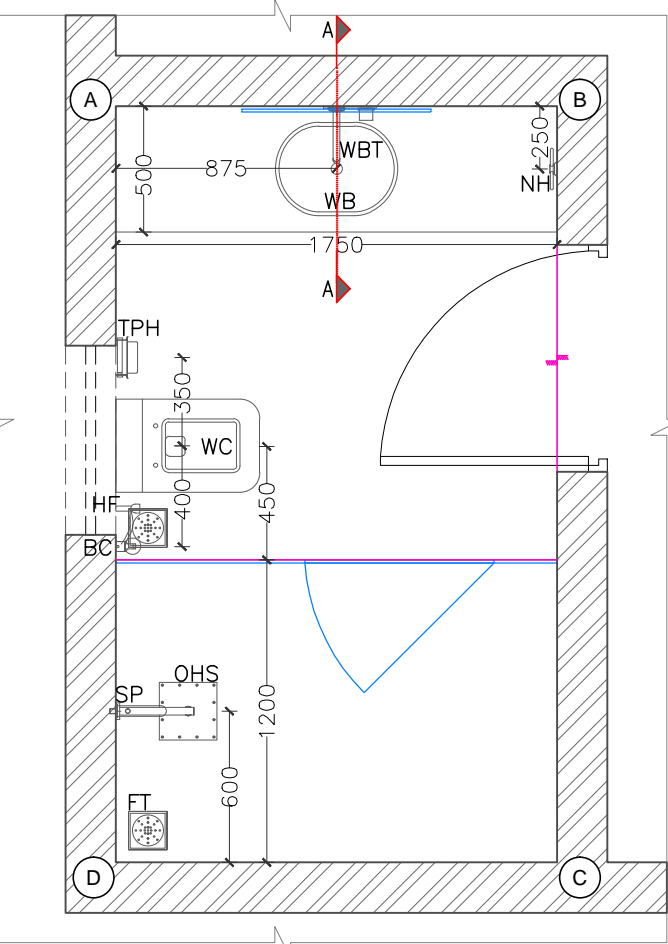


LAST SAVED BY: kpatel1 7/6/25 5:18 PM

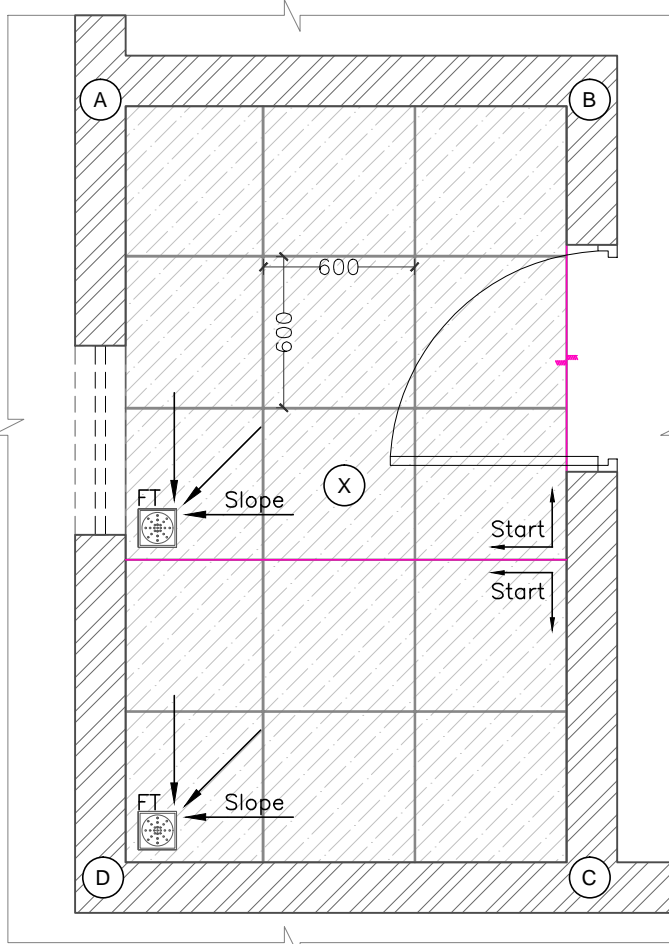
This drawing is property of Mamta Shah & Associates. Without our prior consent, it must be neither copied nor made available to third parties, nor must it be used by the recipient or third parties for the purpose other than for which it is meant.



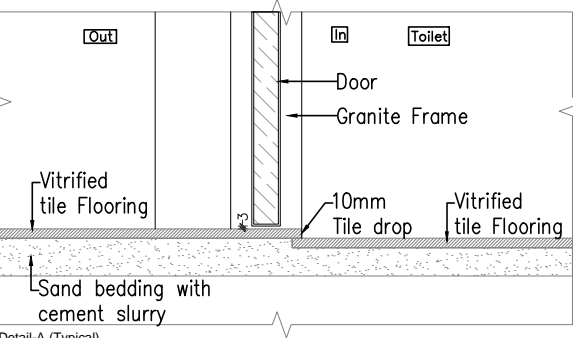
Folded Elevation A-B-C-D-A
Scale 1:30



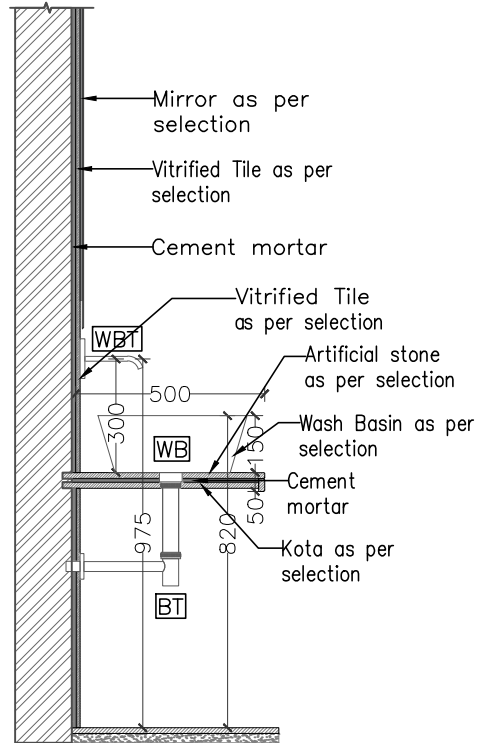
Suite Room Toilet_Fixture Layout
Scale 1:30



Suite Room Toilet_Flooring Layout
Scale 1:30



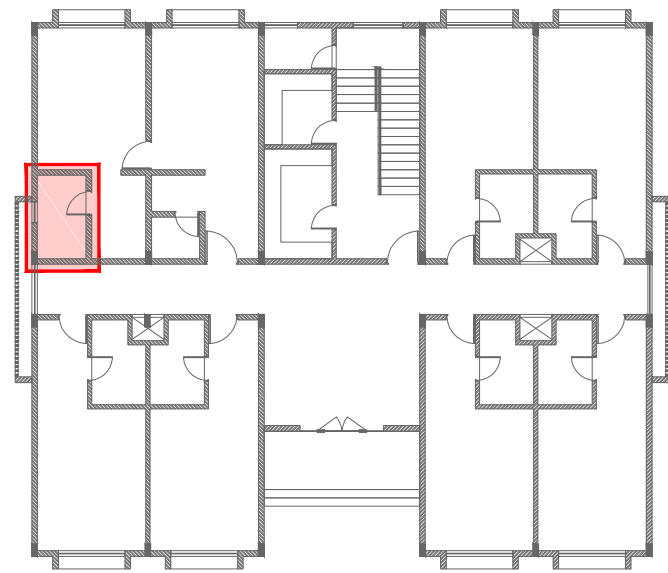
Detail-A (Typical)
Scale 1:05



Section_AA
Scale 1:20

Legend	
	Start Point
	Tile Drop

Abbreviations	Symbol	Description
OHS		Over Head Shower
DV		Diverter
SP		Spout
TPH		Toilet paper holder
WC		Water Closet
HF-BC		Health Faucet-Bib Cock
BT		Bottle Trap
NH		Napkin holder
FP		Flush Plate
FT		Floor trap
WB		Wash Basin
WBT		Wash Basin Tap
Fixtures as per selection sheet		



Key Plan_GF

Schedule of Tiles	
	Type: Vitrified tile Size: 600X600 mm Location: Wall dado
	Type: Anti-skid Vitrified tile Size: 600X600 mm Location: Flooring
Epoxy flooring:- flooring spacer 3 mm thk. grouting shall be horizontal & vertical both ways.	

Legends for hatch	
	Proposed Brick masonry
	Proposed RCC
	Flooring
	Sand Bedding

Project: SKVM					
Drawing: Suite Room Toilet Detail Hostel Building Sheet 01 OF 02					
Drawing Code: 2331_ARC_TD_14_R1					
Print Size: A3		Scale: As Mentioned			
File Title: 2331_ARC_TD_14_R1					
Project Code: MSA 2331	Project Type: ARC & INT	Location: Mandvi			
Print Date: 7-Jun-25	Drawn By: K Patel	Checked By: K Patel	Approved By: M Shah		
 MAMTA SHAH & ASSOCIATES Architects & Interior Designers C-12, Chanakyaapuri Society, Chanakyaapuri Char Rasta, New Santa Road, Baroda Ph. No. +91 265 2712267 / 2710967 mamta@msain.com / www.msain.com					
 Client: Gujarat Mineral Development Corporation					